

Leveraging university initiatives to engage students in addressing local health disparities

Rebecca R Schoen, PharmD, BCACP; Tiffany Hatcher, PharmD; Lisa Ripper, MPH, CPH; Jennifer Elliott, PharmD

CONCLUSIONS

- Including student learners in university initiatives can impact COEPA outcomes while simultaneously improving the health and wellness of the community.
- These experiences offer unique and potentially rich learning but may be limited to a smaller number of engaged students

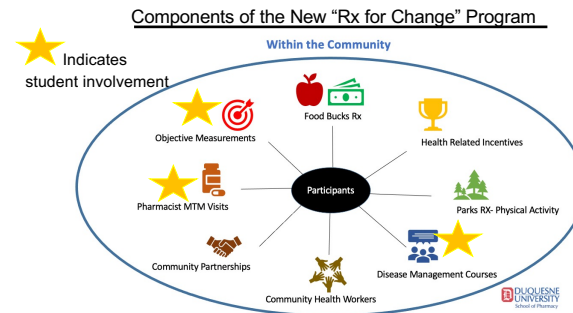
BACKGROUND

- Duquesne University Center for Integrative Health offers community engaged health promotion programs aimed at addressing health disparities in the local community
- Center facilitates partnerships between the schools and community
- In 2021, the “Rx for Change” Program launched as a pilot study aimed at addressing metabolic disease in target neighborhoods through a holistic approach
- “Rx for Change” created additional learning opportunities through the Center
- Pharmacy learners benefit from experiential learning and engagement with diverse patient populations

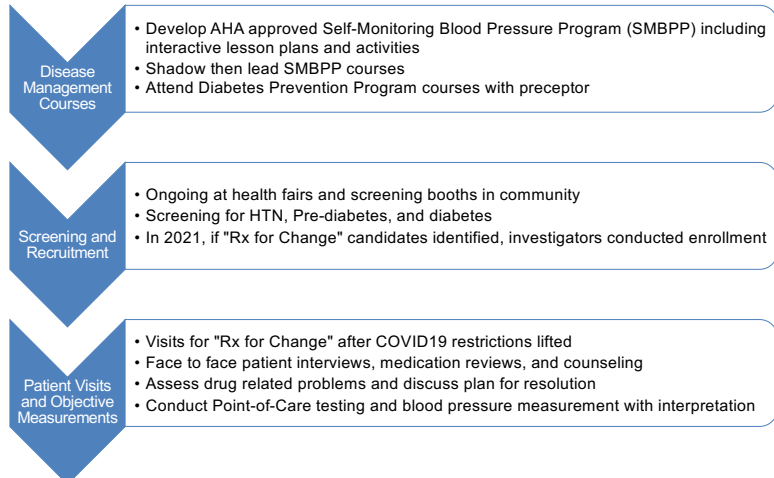
OBJECTIVE

To describe student participation in new community engaged health promotion programs facilitated by University outreach efforts that are aimed at impacting the health and wellness of surrounding under-resourced communities.

METHODS



Student Involvement



RESULTS

- Students on nine APPE rotations engaged in patient care visits for Rx for Change in Fall 2021-Winter 2023
- Students on ten APPE rotations led SMBPP classes from Fall 2021-Spring 2023
- Second and fourth professional year students developed SMBPP curriculum in Spring 2021
- Students engaged with interdisciplinary team, including community health workers and a registered dietitian
- Key COEPA subdomains include:
 - Communication
 - Cultural and structural humility
 - Person-centered care
 - Advocacy
 - Population health and wellness

DISCUSSION

- Students contributed directly to initiatives aimed at addressing health disparities and expanded the potential reach of these programs
- Partnership with the Center for Integrative Health created additional opportunity for Ambulatory Care and Community APPE students
- Advantages include providing additional meaningful experiences for professional students
- Disadvantages include limitations to the number of APPE students that can be engaged and limited availability of non-APPE students.

Disclosures: The authors have no personal or financial conflicts of interest to disclose