

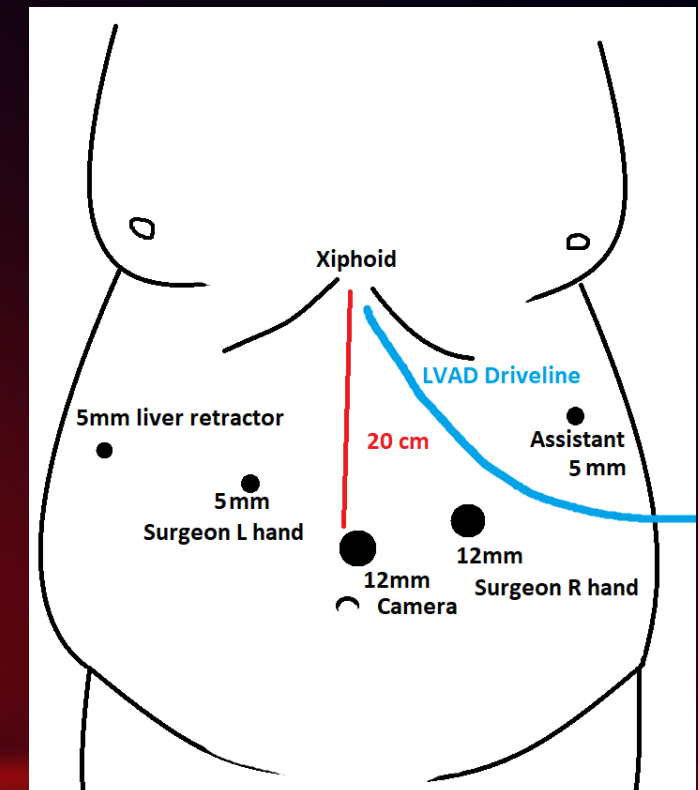
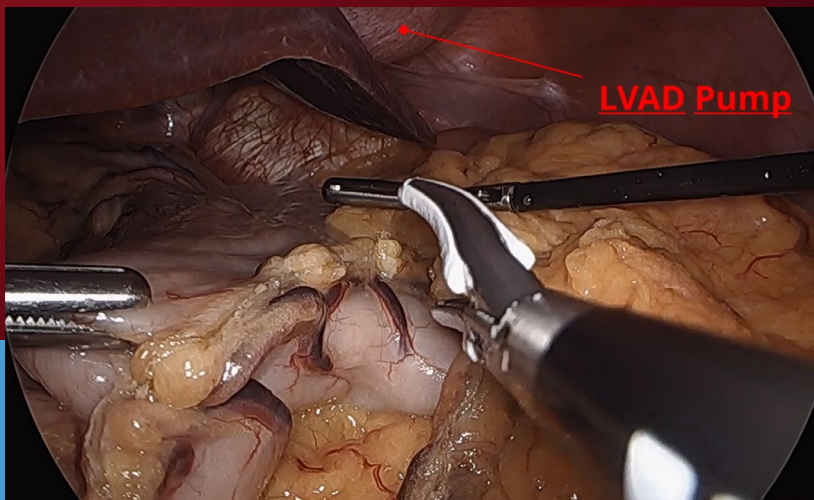
# Laparoscopic Sleeve Gastrectomy: A Bridge to Transplant for Patients with LVAD

Justin Hsu MD, Sarah Weiner MD, Timothy Farrell MD FACS  
University of North Carolina, Chapel Hill, NC

Watch Video Here



- **BMI  $\leq 35$**  is a relative contraindication for heart transplant
- **Preoperative:**
  - Cardiology/Heart Failure Team evaluation, admission and transition off Warfarin to Heparin drip bridging
- **Postoperative:**
  - Fluid management and oral tolerance/anticoagulation management
- Meta-Analysis by Challapalli et al.
  - 59 patients in 8 studies
  - 12.7 months follow up
  - Mean BMI 33.4 kg/m<sup>2</sup> compared with mean preoperative BMI 46.7 kg/m<sup>2</sup>
  - 66% listed for transplant
  - 33% transplanted



Challapalli, J., Maynes, E.J., O'Malley, T.J. et al. Sleeve Gastrectomy in Patients with Continuous-Flow Left Ventricular Assist Devices: a Systematic Review and Meta-Analysis. *OBES SURG* 30, 4437–4445 (2020).



THE UNIVERSITY  
of NORTH CAROLINA  
at CHAPEL HILL

