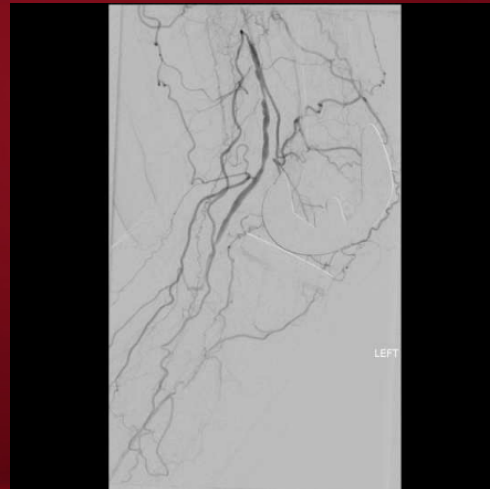
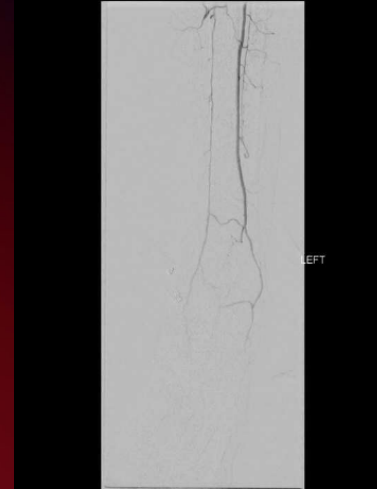


OPTIMAL VISUALIZATION OF THE POPLITEAL ARTERY IN PATIENTS WITH KNEE ARTHROPLASTY

- Increase prevalence of TKR pose a challenge for vascular surgeons when using angiography
- Traditional AP view will obliterate the image of the popliteal artery due to superimposition of the knee prosthesis
- Lateral view is ideal but difficult for frail patients to maintain during diagnostic or popliteal artery intervention.
- ipsilateral knee flexion and contralateral oblique position of the image intensifier can provide suitable alternative for satisfactory visualization of the popliteal artery with minimal inconvenience to the patient and the operator



- Approach used in 22 pts with popliteal art lesions and prior knee arthroplasties
- 13 pts underwent diagnostic angiogram
- 9 pts underwent popliteal artery intervention.
 - Popliteal angioplasty n 5
 - Supera stent n3
 - Covered stent for popliteal pseudoaneurysm n 1
- This position is useful in diagnostic and therapeutic angiography in patients with arthroplasty while keeping the patient comfortable