

# Anterior Pubic Ring Re-creation with Cadaveric Bone to Repair Bilateral Inguinal Hernias In The Setting Of Prostatectomy & Pubic Bone Resection



F. Andrew Agcaoili, MD; Michael Albrink, MD; Department of Surgery, University of South Florida, Tampa, Florida  
Cassandra Ricketts, MD; David Watson, MD; Department of Orthopedic Surgery, University of South Florida, Tampa, Florida

## Introduction

- Pubic bone resection rates having been decreasing
- Patients continue to experience hernias
- Hernia repair was challenging
- No scaffolding of bone for the attachment of mesh.



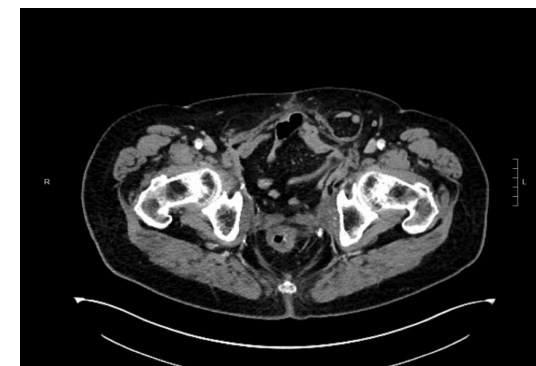
## Case Presentation

- 73 yo M with prostate cancer s/p prostatectomy, cystectomy and pubic bone resection
- CC: Bilateral inguinal hernias
- Procedure
  - Adhesiolysis
  - Cadaveric bone for allograft reconstruction and ORIF of anterior pelvic ring
  - 12x10 cm composite mesh placed in pelvis and draped around rectum
  - Anterior skin flaps created
  - Microporous mesh 6x6 cm onlay position
- Bilateral inguinal hernias remained reduced



## Discussion

- Using cadaveric bone to re-create the anterior pelvic ring provides adequate scaffolding for the anterior fascia for bilateral inguinal hernia repair.



## References

- Kohler JE, Friedstat JS, Jacobs MA, Voelzke BB, Foy HM, Grady RW, Gruss JS, Evans HL. Reconstruction of the symphysis pubis to repair a complex midline hernia in the setting of congenital bladder exstrophy. *Hernia*. 2015 Aug;19(4):681-4.

